



U.S. Customs and Border Protection

Southwest Border Migration

March 8, 2017

Today, U.S. Customs and Border Protection is releasing illegal border crossing data through the month of February and the numbers show an unprecedented decline in traffic. From January to February, the flow of illegal border crossings as measured by apprehensions and the prevention of inadmissible persons at our southern border dropped by 40 percent.

The drop in apprehensions shows a marked change in trends. Since the Administration's implementation of Executive Orders to enforce immigration laws, apprehensions and inadmissible activity is trending toward the lowest monthly total in at least the last five years. This change in the trend line is especially significant because CBP historically sees a 10-20 percent increase in apprehensions of illegal immigrants from January to February. Instead, this year we saw a drop from 31,578 to 18,762 persons - a 40 percent decline.

This is encouraging news as in the period from Oct 1, 2016 to the Presidential inauguration, U.S. Customs and Border Protection reported 157,000 apprehensions of illegal immigrants – a 35 percent increase over the previous fiscal year, with family units increasing by more than 100 percent. However, since President Trump took office on January 20, we have seen a dramatic drop in numbers.

The decrease is also encouraging news because it means many fewer people are putting themselves and their families at risk of exploitation, assault and injury by human traffickers and the physical dangers of the treacherous journey north.

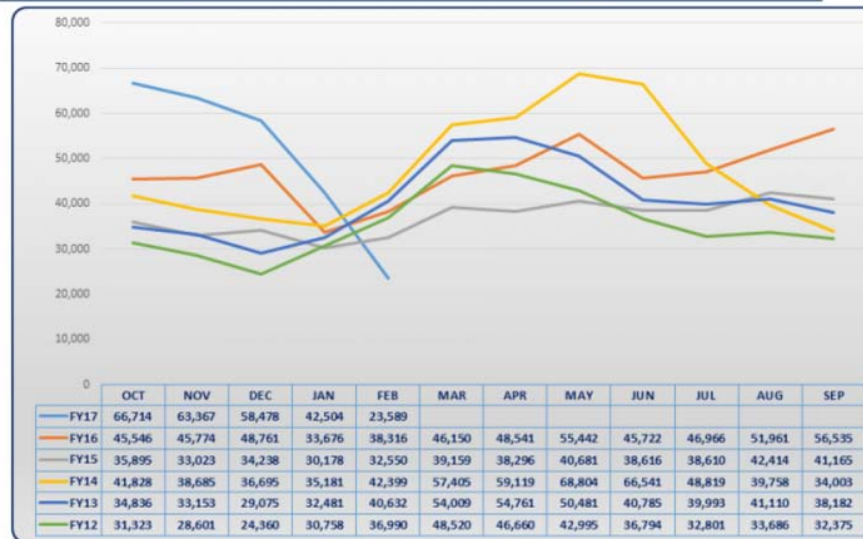
Additionally, we are seeing an increase in the fees charged by human smugglers along the U.S. southwest border. Since Nov. 2016, "coyotes" have hiked their fees in some areas by roughly 130 percent - from \$3,500 to \$8,000 in certain mountainous regions. Changes in U.S. policy, including the detention of apprehended aliens, drive up the smuggling fees.

As directed in my memoranda implementing the President's executive orders, we remain committed to carrying out fair, impartial and humane enforcement of the nation's immigration laws. We will remain vigilant to respond to any changes in these trends, as numbers of

illegal crossings typically increase between March and May. However, the early results show that enforcement matters, deterrence matters, and that comprehensive immigration enforcement can make an impact.

John F. Kelly
Secretary of Homeland Security

CBP Southwest Border Total Apprehensions



U.S. Border Patrol Apprehensions FY2017 YTD(October 1 - February 28)

USBP	Demographic	OCT	NOV	DEC	JAN	FEB	Total
Southwest Border	UAC	6,708	7,350	7,194	4,417	1,922	27,591
	Family Units	13,116	15,588	16,139	9,300	3,124	57,267
Southwest Border Total Apprehensions		46,181	47,210	43,255	31,578	18,762	186,986

*Numbers are subject to change during agency reconciliation of individual records, these numbers reflect the current status and numbers as of 3/1/17.

In February, a total of 18,762 individuals were apprehended between ports of entry on our Southwest Border, compared with 31,578 in January and 43,255 in December. In Fiscal Year (FY) 2016, USBP apprehended 408,870 individuals along our southwest border, compared to 331,333 in FY15, and 479,371 in FY14.

For breakdown by Sector, visit [USBP Southwest Border Apprehensions by Sector](#)

Office of Field Operations Inadmissibles FY2017 YTD(October 1 - February 28)

Field Operations	Demographic	OCT	NOV	DEC	JAN	FEB	Total
Southwest Border	UAC	1,831	1,438	966	594	266	5,095
	Family Units	6,489	5,127	3,867	2,739	1,051	19,273
Southwest Border Total Inadmissibles		20,529	16,153	15,176	10,899	4,808	67,565

**Numbers are subject to change during agency reconciliation of individual records, these numbers reflect the current status and numbers as of 3/2/17.*

In February, a total of 4,808 people presenting themselves at ports of entry on the Southwest Border were deemed inadmissible compared to 10,899 in January and 15,176 in December. In Fiscal Year (FY) 2016, 150,825 were deemed inadmissible compared to 114,486 in FY15 and 90,601 in FY14.

OFO inadmissibility metrics include individuals encountered at ports of entry who are seeking lawful admission into the United States but are determined to be inadmissible, individuals presenting themselves to seek humanitarian protection under our laws, and individuals who withdraw an application for admission and return to their countries of origin within a short timeframe.

For breakdown by Field Office, visit [Southwest Border Inadmissibles by Field Office](#)

Last published: March 8, 2017

Tags: [Unaccompanied Alien Children \(UAC\)](#), [Statistics](#)



U.S. Customs and Border Protection

U.S. Border Patrol Southwest Border Apprehensions by Sector

Southwest Border Unaccompanied Alien Children (0-17 yr old) Apprehensions

Comparisons below reflect Fiscal Year 2017 YTD(October 1, 2016 - February 28, 2017) compared to the same time period for Fiscal Year 2016.

Unaccompanied Alien Children by Sector			
Sector	FY2016YTD	FY2017YTD	% Change FY16YTD to FY17YTD
Big Bend	559	311	-44%
Del Rio	1,164	909	-22%
El Centro	406	705	74%
El Paso	1,386	2,576	86%
Laredo	1,214	1,030	-15%
Rio Grande	13,919	17,373	25%
San Diego	601	864	44%
Tucson	2,916	2,086	-28%
Yuma	1,320	1,737	32%
USBP Southwest Border Total	23,485	27,591	17%

Southwest Border Family Unit* Apprehensions

Comparisons below reflect Fiscal Year 2017 YTD(October 1, 2016 - February 28, 2017) compared to the same time period for Fiscal Year 2016.

Family Unit* Apprehensions by Sector			
Sector	FY2016YTD	FY2017YTD	% Change FY16YTD to FY17YTD
Big Bend	623	548	-12%
Del Rio	1,498	1,821	22%
El Centro	452	1,315	191%
El Paso	1,697	6,892	306%
Laredo	733	607	-17%
Rio Grande	18,247	38,621	112%
San Diego	872	2,207	153%
Tucson	1,402	1,432	2%
Yuma	2,138	3,824	79%
USBP Southwest Border Total	27,662	57,267	107%

Unaccompanied Alien Children Apprehensions by Country

Numbers below reflect Fiscal Years 2010-2016, FY 2017 YTD(October 1, 2016 - February 28, 2017)

Unaccompanied Alien Children Apprehensions by Country

Country	FY 2016	FY 2017 YTD	FY 2016	FY 2017 YTD
El Salvador	5,990	16,404	9,389	17,512
Guatemala	8,263	17,056	13,589	18,216
Honduras	6,747	18,244	5,409	10,468
Mexico	17,240	15,634	11,012	11,926

Family Unit* Apprehensions by Country

Numbers below reflect Fiscal Year 2016, FY 2017 YTD(October 1, 2016 - February 28, 2017)

Family Units* Apprehensions by Country		
Country	FY 2016	FY 2017 YTD
El Salvador	27,114	20,231
Guatemala	23,067	17,056
Honduras	20,226	16,918
Mexico	3,481	1,353

*Note: (Family Unit represents the number of individuals (either a child under 18 years old, parent or legal guardian) apprehended with a family member by the U.S. Border Patrol.)

Southwest Family Unit Subject and Unaccompanied Alien Children Apprehensions Fiscal Year 2017 - By Month

October November December January February			
	FMUA	UAC	Total Apprehensions
Sector	FY 2017 OCT	FY 2017 OCT	FY 2017 OCT
Big Bend	138	86	697

	FMUA	UAC	Total Apprehensions
Sector	FY 2017 OCT	FY 2017 OCT	FY 2017 OCT
Del Rio	427	223	2,105
El Centro	278	198	2,439
El Paso	1,482	621	3,973
Laredo	133	283	3,350
Rio Grande	8,719	4,082	22,641
San Diego	435	180	2,935
Tucson	356	581	5,925
Yuma	1,148	456	2,117
USBP Southwest Border			
Total	13,116	6,710	46,182

Back to [Southwest Border Migration](#)

Last published: March 8, 2017

Tags: [Statistics](#), [U.S. Border Patrol](#), [Unaccompanied Alien Children \(UAC\)](#)



U.S. Customs and Border Protection

Southwest Border Inadmissibles by Field Office

Southwest Border Unaccompanied Alien Children (0-17 yr old) Inadmissibles

Comparisons below reflect Fiscal Year 2017 YTD(October 1, 2016 - February 28, 2017) compared to the same time period for Fiscal Year 2016.

Unaccompanied Alien Children			
Field Offices	FY2016YTD	FY2017YTD	% Change FY16YTD to FY17YTD
El Paso	791	1,871	137%
Laredo	717	1,722	140%
San Diego	1,195	676	-43%
Tucson	724	826	14%
Field Ops Southwest			
Border Total	3,427	5,095	49%

Southwest Border Family Unit Inadmissibles*¹

Numbers below reflect Fiscal Year 2017 YTD (October 1, 2016 - February 28, 2017)

Family Units	
Field Offices	FY2017 YTD
El Paso	4,506

Family Units	
Field Offices	FY2017 YTD
Laredo	7,711
San Diego	3,394
Tucson	3,662
Field Operations Southwest Border Total	19,273

¹Note: Field Operations only started collecting Family Unit numbers as of March 2016

Unaccompanied Alien Children Inadmissibles by Fiscal Year

Numbers below reflect totals for Fiscal Years 2015 and 2016, FY 2017 YTD (October 1, 2016 - February 28, 2017)

Unaccompanied Alien Children by Country			
Country	FY 2015	FY 2016	FY 2017 YTD
El Salvador	454	2,553	1,433
Guatemala	1,378	3,961	2,022
Honduras	335	1591	843
Mexico	1,713	2,169	647

Family Unit Inadmissibles by Fiscal Year*¹

Numbers below reflect the total for FY 2017 YTD (October 1, 2016 - February 28, 2017)

Family Unit by Country	
Country	FY 2017 YTD
El Salvador	3,366
Guatemala	3,869
Honduras	2,658

Family Unit by Country	
Country	FY 2017 YTD
Mexico	4,147

***Note:** (Family Unit represents the number of individuals (either a child under 18 years old, parent or legal guardian) deemed inadmissible with a family member by the Office of Field Operations.)

¹**Note:**Field Operations only started collecting Family Unit numbers as of March 2016

Cuban Inadmissibles

U.S. Customs and Border Protection maintains a robust posture regarding the enforcement of our immigration laws along the nation’s borders and coastal areas. We continue to promote safe, legal and orderly migration from Cuba under our Migration Accords and deter dangerous and unlawful migration from Cuba.

*Effective January 12, 2017, the United States ended the special parole policy, also known as the “wet-foot/dry-foot” policy, for Cuban migrants that has been in place since the mid-1990s. Since then, Cuban nationals who attempt to illegally enter the United States are subject to removal, consistent with our enforcement priorities. These actions are part of the ongoing normalization of relations between the governments of the United States and Cuba, and reflect a commitment to have a broader immigration policy in which we treat people from different countries consistently.

Numbers below reflect totals for Fiscal Years 2012-2016, FY 2017 YTD (October 1, 2016 - February 28, 2017)

Cuban Inadmissibles						
Field Office	FY2012	FY2013	FY2014	FY2015	FY2016	FY2017 YTD
El Paso	154	219	415	685	5,018	324
Laredo	9,429	12,384	15,333	26,181	34,658	12,818
San Diego	727	959	1,229	1,555	1,589	551
Tucson	86	142	132	221	258	158
Southwest Border Totals	10,396	13,704	17,109	28,642	41,523	13,851

Haitian Inadmissibles

Recently, CBP has seen an increase in the number of Haitians arriving at border crossings with no status in the United States. In FY16, CBP officers at Ports of Entry at the Southwest Border saw 6,424 Haitian inadmissibles, which represented a significant increase as compared to FY15. The majority of Haitian inadmissibles are presenting themselves at the San Ysidro Port of Entry, which falls under the San Diego Field Office. In response to the influx, the Office of Field Operations deployed 100 additional officers to support ports of entry within the San Diego Field Office. OFO has also deployed 16 special personnel with Creole fluency to support the processing of Haitian nationals at the ports, has leveraged remote processing capabilities, streamlined administrative case processes with the collaboration of the Office of Chief Counsel, U.S. Immigration and Customs Enforcement and U.S. Citizenship and Immigration Services, and continues to coordinate with the U.S. Border Patrol to support the overflow of Haitian inadmissibles in custody. After officers have processed individuals with no status to legally enter the U.S., Haitians are placed into the custody of U.S. Immigration and Customs Enforcement for further disposition. Some, but not all Haitians arriving at ports of entry without legal status, are expressing credible fear of their return to Haiti.

Numbers below reflect totals for Fiscal Years 2012-2016, FY 2017 YTD (October 1, 2016 - February 28, 2017)

Haitian Inadmissibles						
Field Office	FY2012	FY2013	FY2014	FY2015	FY2016	FY2017 YTD
El Paso	0	0	1	0	2	17
Laredo	1	1	6	1	6	159
San Diego	821	921	477	333	6,377	7,803
Tucson	0	0	0	0	39	964
Southwest Border Totals	822	922	484	334	6,424	8,943

Southwest Border Inadmissibles Fiscal Year 2017 - By Month

October	November	December	January	February
---------	----------	----------	---------	----------

	FMUA	UAC	Total Inadmissibles
Field Offices	FY 2017 OCT	FY 2017 OCT	FY 2017 OCT
El Paso	1,543	633	3,273
Laredo	2,762	760	8,727
San Diego	1,018	176	6,238
Tucson	1,166	262	2,291
Total	6,489	1,831	20,529

Cuban and Haitian inadmissibles*

	Cubans	Haitians
Field Offices	FY 2017 OCT	FY 2017 OCT
El Paso	90	0
Laredo	3,716	57
San Diego	172	2,919
Tucson	44	495
Total	4,022	3,471

*Note: Cuban and Haitian inadmissibles are a subset of the Total Southwest Border Inadmissibles data above

Back to [Southwest Border Migration](#)

Last published: March 8, 2017

Tags: [Statistics](#), [Port Security](#), [Unaccompanied Alien Children \(UAC\)](#)

